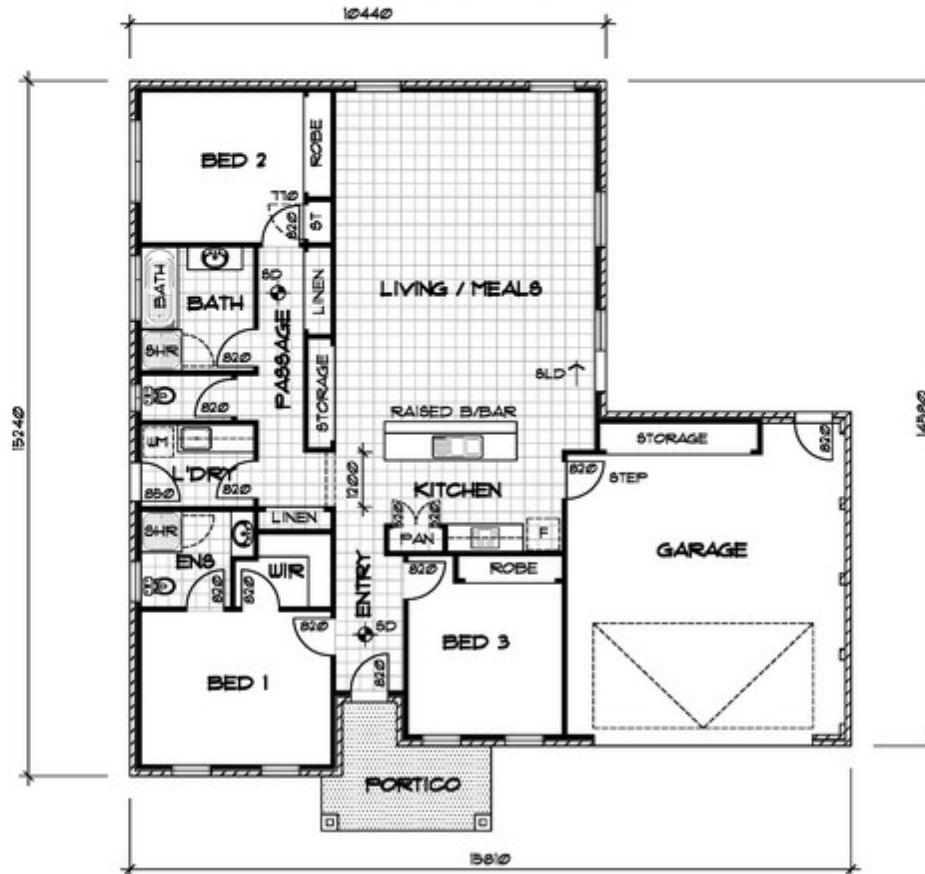




FRONT ELEVATION



BUILDING AREAS :	
LIVING	- 147.71 sq m (15.88 sq)
GARAGE	- 45.73 sq m (4.92 sq)
PORTICO	- 7.70 sq m (.82 sq)
TOTAL	- 201.14 sq m (21.62 sq)



© COPYRIGHT - Craig Steel Building Design  
 PT. The contents of this drawing are  
 subject to copyright