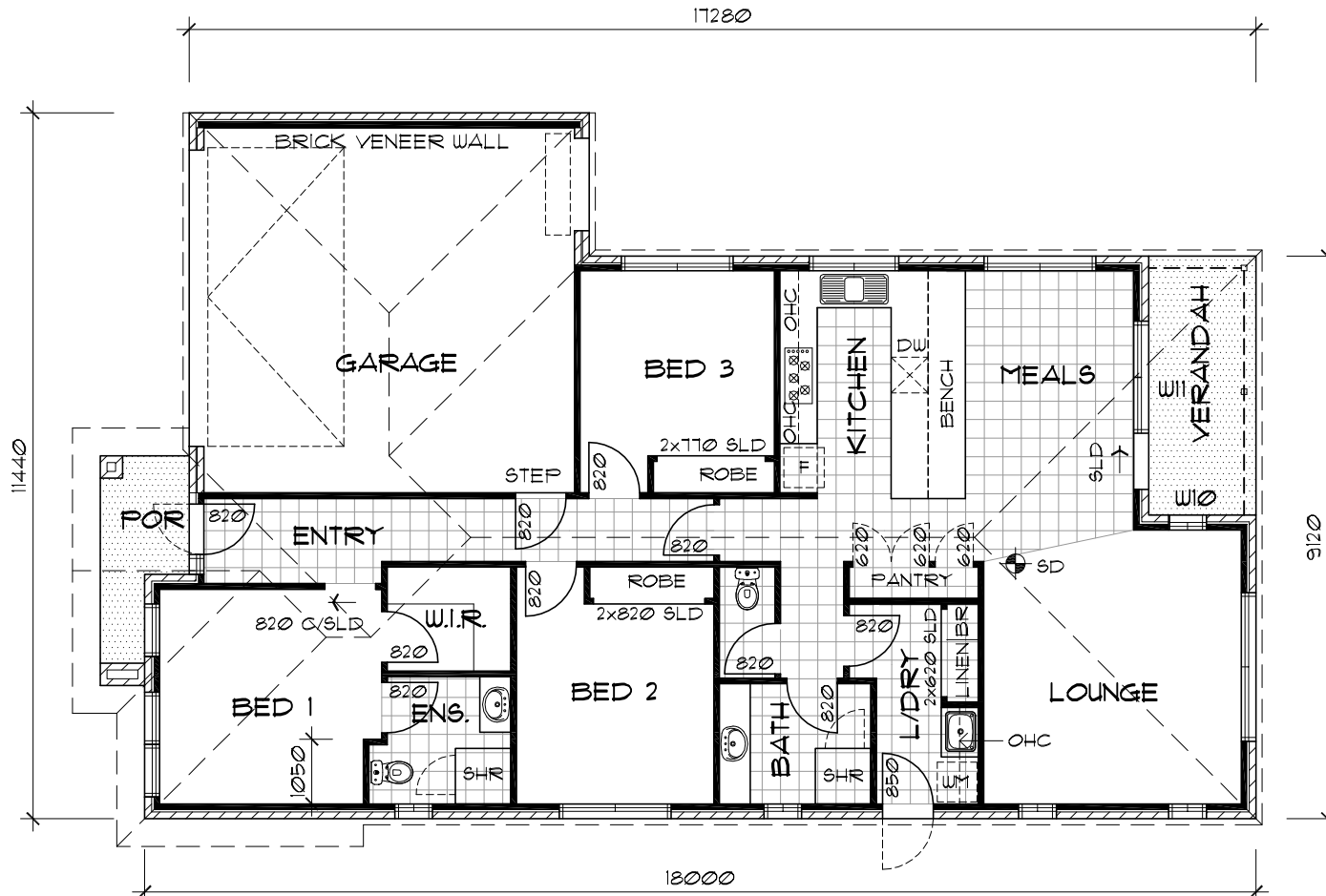


FRONT ELEVATION



FLOOR PLAN

BUILDING AREAS :	
LIVING	- 12824 sq m (13.78 sq)
GARAGE	- 3964 sq m (4.26 sq)
VERANDAH	- 730 sq m (7.78 sq)
PORCH	- 406 sq m (4.3 sq)
TOTAL	- 17924 sq m (19.25 sq)



PO BOX 403
Maryborough, Vic, 3465
Ph (03) 54613008 Fax (03) 54613009